



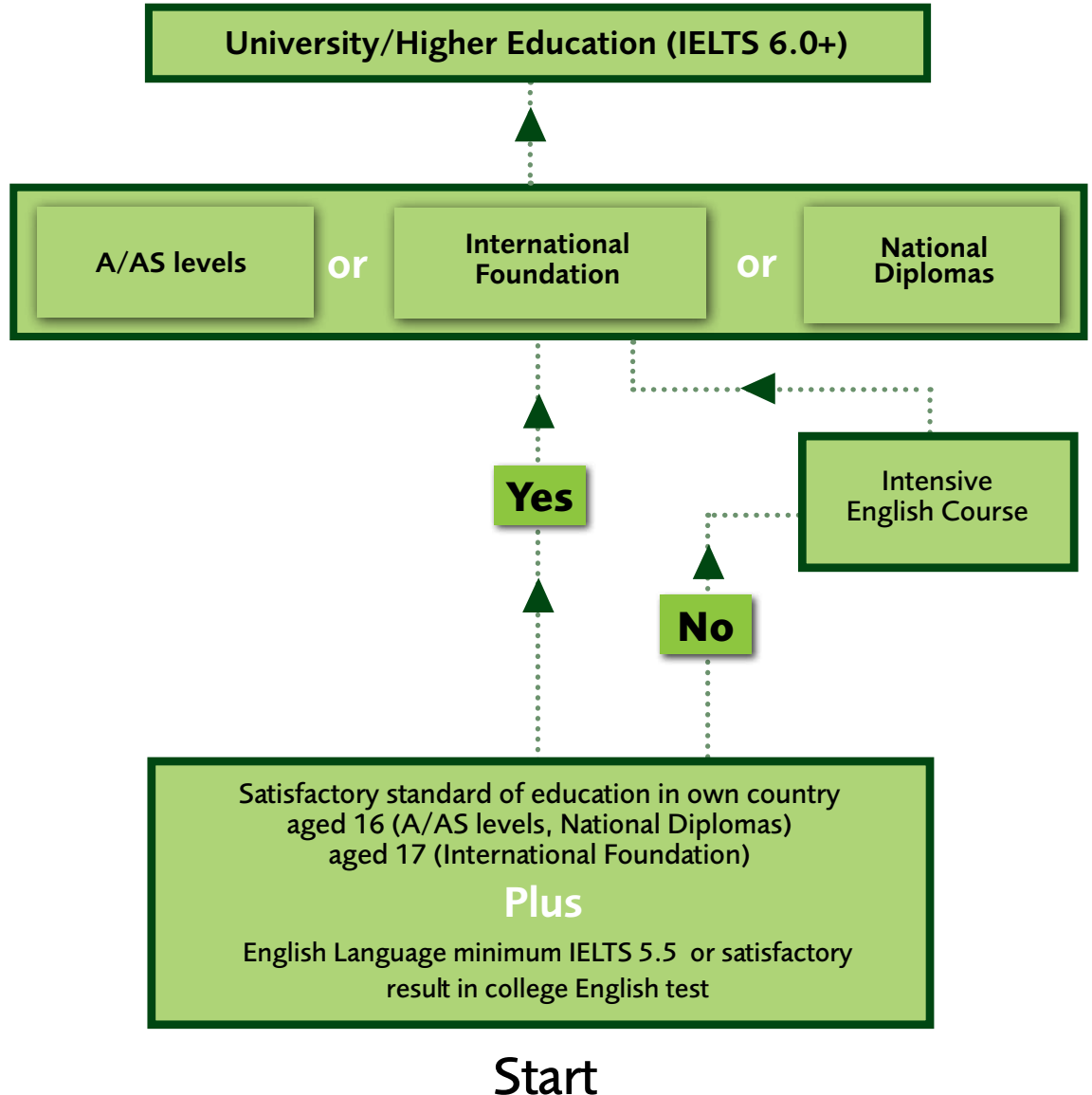
Kanika Bhasin

Kanika enrolled at Wakefield College on an A level programme of 4 subjects. She successfully completed her High School education in New Delhi, India, but needed Biology A level and other high A level grades to be successful in the UK in applying to a good university to study medicine.

Kanika is a very independent young lady who applied to Wakefield College herself on the recommendation of a friend. During the first year of her course Kanika was voted the President of the Student Union and represented the student views to the Governors of the College.

Course listings

Education route



Course listings

English Language Studies

English as a Foreign Language (EFL) teaching at Wakefield College is accredited by the British Council.

All teachers are experienced and fully qualified. Teaching methods are varied and include discussions, presentations, role play, group work, listening to tapes and CDs, videos and DVDs and examination practice.

We offer flexible start dates in September, January and April.

General English

This full-time course is for students who wish to develop all aspects of general English: speaking, listening, reading and writing in order to progress onto other academic or vocational courses. Tutors use a variety of teaching methods and the environment is informal and friendly. A College certificate may be awarded for students who complete assignments and students may achieve City and Guilds qualifications.

Intensive English

This preparatory course is for students who wish to improve their English before progressing onto an academic programme such as A Levels, BTEC National Diplomas or International Foundation.

Students receive 17 hours of tuition and up to 9 hours of directed study.

Entry Requirements:
Intermediate level of English (IELTS 4.0-4.5)

Intensive English- sample timetable

Day/ Time	9am	10am	11am	12noon	1pm	2pm	3pm
Monday	Diary Time		Intensive English		Lunch	Intensive English	
Tuesday	Tutorial	Homework	Intensive English		Lunch	Independent Study	
Wednesday	Homework	Study Skills		Lunch	Free time for sports, drama clubs and societies		
Thursday	Independent Study/ Project Work		Intensive English		Lunch	IELTS Training	
Friday	Diary Time	British Culture and Society		Lunch	Using ICT as a student		

All full-time students receive additional English classes to support their studies

As well as concentrating on the essential elements of reading, writing, speaking and listening the course includes modules on:

IELTS Training - covers the different elements of the test and techniques

Study Skills - research, writing essays and reports, giving presentations, team work and managing your time

British Culture and Society - this course covers many different aspects of British culture including media, politics, education, religion, food and social behavior

Tutorial - each student is assigned their own personal tutor. All aspects of studying and living in the UK are discussed during weekly tutorials.

Support for all students

All students receive additional English classes to improve their language skills and prepare them for university.



Ken

Ken came straight to Wakefield College from Vietnam and completed a BTEC National Diploma in Business and Management. This is a practical course continually assessed with regular assignments. Ken achieved excellent grades and is now at Brunel University studying for a Business degree.

Course listings

GCE A Levels at Wakefield Sixth Form College

Choose from:

Art & Design:
A & D (3D Design)
A & D (Fine Art)
A & D (Photography)
A & D (Textiles)
Accounting
Biology
Business Studies
Chemistry
Critical Thinking (AS)
Drama and Theatre Studies
English Language
English Literature
Film Studies
French
General Studies
Geography
Government & Politics
Graphic Communication
History
ICT
Law
Mathematics Use of
Mathematics (AS)
Media Studies
Physics
Psychology Photography
(AS/A Level)
Spanish
Sociology
Physical Education
Urdu

Successful completion of A levels will enable you to apply to universities throughout the UK.

A levels are a two year programme and students usually choose either 3 or 4 subjects to study

Our Sixth Form College offers a wide range of A level subjects and we are confident that we can provide a programme of study to meet your individual requirements. All students receive additional English classes to support their study and extensive guidance in applying for Higher Education.

Students each have a personal tutor who follows a very detailed programme of study skills and personal development within weekly tutorials.

All students receive additional English classes to improve their language skills and prepare them for university.



Entry requirements

5 GCSE subjects at Grade C or above or the equivalent overseas public examination

A minimum English Language level of IELTS 5.0

You must be aged 16 or over at the beginning of the course

For more information on any course please visit our website at:

www.wakefield.ac.uk

Course listings

International Foundation (Also known as Access to Higher Education Diploma)

Choose from

- Science
- Business
- Humanities
- Construction and Civil Engineering
- Diploma in Art & Design Studies

Foundation Courses are one year full time programmes designed to enable students to progress onto a wide range of courses at university.

International Foundation (also known as Access to Higher Education Diploma) is accredited by the awarding body AQA and is widely accepted by UK universities. Wakefield College has been successfully offering this well respected course for more than 20 years and students have progressed to a wide range of universities and courses.

You are not restricted to applying to a particular university.

Wakefield College offers direct progression to appropriate courses within the School of the Built Environment at Leeds Metropolitan University from the International Foundation in Construction and Civil Engineering. Offers are subject to an interview and IELTS 6.0. Degree courses require a minimum mark of 60% in all modules, and HND courses require that you pass all modules



Entry requirements:

Successful completion of your home country's secondary school qualifications

A minimum English Language level of IELTS 5.5

You must be aged 17 or over at the beginning of the course

For more details please ask for the International Foundation course information leaflets or visit our website at:

www.wakefield.ac.uk

Advantages and benefits of courses

A Levels:

Provide a wide choice of subjects

Are recognised by all universities including Oxford and Cambridge

Keep options open, for example about which undergraduate programme to study.

Advantages of National Diplomas

Coherent programme, with focus on study area of interest

Access to specialist facilities and resources

Few, if any, examinations, the emphasis is on coursework

Academic content in a vocational context

Recognised by universities as a good preparation for more vocational undergraduate programmes

Popular with 'home' students.

Advantages of International Foundation

Quicker route onto undergraduate programme

More coherent programme, with focus on study area of interest

Internal assessment with strong emphasis on coursework

Acceptable for entry onto many under-graduate programmes



Vu Tuan Anh

Vu is from Vietnam. After an Intensive English programme Vu moved onto a two year BTEC National Diploma course in Business. He enjoyed the practical nature of the course, the teamwork and the way assessment consist of a combination of both assignments and end of course examinations. Vu is now at Leeds Trinity University.

Course listings

National Diplomas

Choose from:

Applied Science
(Medical Science)
Animal Management
Performing Arts (Acting)
Performing Arts
(Musical Theatre)
Performing Arts (Dance)
Business & Management
Children's care learning and
development
Civil Engineering
Construction
Electrical and Electronic
Engineering/Mechanical Engineering
Fine Art
Games Design
Graphic Design
Hospitality
IT Practitioners system support
Music Technology
Music Practice
Uniformed Public Services
Sport and Exercise Science
Sports (Outdoor Adventure)
Sports Development & Fitness
Travel and Tourism
Photography

National Diplomas are vocational courses that are increasingly attractive to international students and have the same academic value as A Levels. Often described as 'career focussed' these qualifications combine a rigorous academic programme with the practical skills and knowledge so valued by employers.

Assessment is through a combination of course work and external examinations and students may progress to university degrees in their chosen specialism.



Entry requirements:

5 GCSE subjects at Grade C or above or the equivalent overseas public examination

A minimum English Language level of IELTS 5.0

You must be aged 16 or over at the beginning of the course

For more information on any course please visit our website at:

www.wakefield.ac.uk

Course listings

Higher Education at **University Centre Wakefield**

HND Choices

HND in Photography

HND in Dance

HND in Music Performance
(Popular Music)

HND in Theatre

HNDs and Foundation degrees take 2 years to complete. You can then transfer to a university to study for one further year to complete a full degree.

You can study Higher National Diplomas (HNDs) and Foundation Degrees at Wakefield and take advantage of the smaller class sizes and individual support you will receive.



Foundation Degrees Choices

Management & Business enterprise

Web Design

Computing

Sports Performance Coaching

Health-Related Exercise & Fitness

Commercials Photography

Health and Social Care

Degrees

BA(Hons) in Business and Management degree

(A 2 year Foundation Degree followed by 1 year 'top up' course validated by Leeds Metropolitan University)

Entry requirements:

Entry requirements for Higher Education courses vary. Please contact the International Centre for details.

For more information on any course please visit our website at:

www.wakefield.ac.uk



Hui Cao

Hui Cao from China, studying the International Foundation course in Business.

"I took the International Foundation Course which took me one year of study. Wakefield College run this course very well. I like Wakefield because the people here are friendly and I enjoy living here with my friends"

Hui is now studying Business at Manchester University.



Yun Zhi Wang

Yun Zhi Wang is now at Imperial College London studying engineering after achieving excellent A Level grades.



Zhaohong Qiu

Zhaohong Qiu achieved excellent qualifications in China before enrolling as a student at Wakefield College. He won prizes for Physics and Chemistry whilst at school (the Zheng Yu Tong School in Shunde, Guangdong). Zhaohong Qiu chose to study in the UK to improve his English and progressed to studying mathematics at Imperial College London.

"People in England are friendly and very welcoming. The teachers are patient and the teaching is not teacher led! Students can be very independent, I enjoy that. I did miss my family at first but soon made friends."

Qiu was awarded the Walshaw Award at Advanced Level prize for Mathematics at Wakefield College.

Tuition Fees

Because we are a state funded College our tuition fees are reasonable and offer very good value for money compared to many other UK providers

Course	Fee
English Language	
A Levels and National Diplomas	£4,800
International Foundation	£5,500
Higher Education	£6,400

(a bursary is available for all students progressing onto HND/Foundation Degrees from Wakefield College courses)

The College offers a limited number of scholarships for outstanding students each year. Please contact the International Centre for further details.



Typical Costs

Below is an example of the typical cost of studying for 1 year on the A Level programme

The tuition fees for a student starting a full-time A Level course at present is £4,800 per college year.

Accommodation

Board and lodging – living with a UK host family. Payment will be required for the cost of the lodgings (rent, food and heat) and at present the cost per week is £100. This will include half-board (breakfast and evening meal) on weekdays and all meals at weekends. The payments will be made directly to the host family.

Living expenses

This is very difficult to estimate as individuals vary so much in their requirements. A sum of £30-£40 per week will be adequate for many students.

Part time work

Many students work for a few hours each week to earn some extra pocket money and also to have the experience of employment in the UK.

What we offer

- A safe and accessible place to study
- High quality State College
- Relatively inexpensive route to university
- Close to major cities with excellent universities
- Wide choice of subjects including English
- Learn with UK students
- Excellent student support

Overall cost based on a student following an A Level Programme

Tuition fees each year	£4,800	Paid to the college
Accommodation: assume £100 per week for 45 weeks	£4,500	Paid to the host family
Living expenses: assume £35 per week for 45 weeks	£1,575	Student's own spending
Total	£10,875	per year



Liang Haichao and Huifen Huang

Liang Haichao and Huifen Huang chose to study an International Foundation Programme including Business, Statistics, Maths and Physics. They both successfully completed their course and are now studying for a Business Degree at Newcastle University.

Liang Haichao chose Wakefield College partly because it has a student population of mainly English native speakers so he had to speak English all the time and he was surrounded by English culture. Huifen Huang lived with a host family in Wakefield, and being a very friendly person, soon became a welcome and valued addition to the family.





Esther

Esther is from Nigeria. She completed the Foundation Degree in Business at Wakefield College and is now at Leeds Metropolitan University for her final year of an honours degree. Esther was able to take advantage of the generous bursaries available.

Useful Information

www.britishcouncil.org

British Council



www.ukcisa.org.uk

UKCISA

(UK Council for International Students Affairs)

This comprehensive site offers many valuable guidance notes including information on applying for a visa, adjusting to life in the UK, and 'Safety First' a personal Safety guide for international students'



www.ukvisas.gov.uk

This is the British Government website for details and further advice.



www.fco.gov.uk

This Foreign Office website will give you details about how to apply in your own country.



www.naric.org.uk

UK NARIC is the National Agency responsible for providing information and advice about vocational, academic and professional skills and qualifications from all over the world. They provide information about the equivalency of qualifications and skills from overseas to the UK's national qualifications frameworks.



How to Apply

Please complete the International Students Application Form and return it to the International Centre with copies of your certificates/qualifications and transcripts in English if necessary. Please also send your passport details

Please note: We will be unable to process your application if you fail to provide evidence of your qualifications

We will send you an acknowledgement (usually by email) and a decision on whether we can offer you a place within 2 weeks of your application

The appropriate Programme Manager will consider your application and decide whether to offer you a place.

If the College decides to offer you a place, we will send a 'Conditional Offer' letter to you requesting a deposit in order to reserve your place.

When we have received your deposit we will send you a 'Confirmation of Acceptance of Studies certificate' that you should use when applying for your visa under Tier 4 of the UK Points Based System.

At this stage we will also ask you to complete the 'Accommodation Request Form' and provide details of your travel arrangements so that we can arrange to meet you at the airport and reserve suitable accommodation for you.

The airport transfer is free if you fly into either Manchester or Leeds & Bradford International Airports. We will arrange for you to be collected from other airports for an additional charge.

For details please contact the International Centre:
TheInternationalCentre@wakefield.ac.uk





The International Centre, Wakefield College, Margaret Street, WF1 2DH, UK
Telephone: 00 44 (0) 1924 789554
Fax: 00 44 (0) 1924 789545

General Enquires: TheInternationalCentre@wakefield.ac.uk
Website: www.wakefield.ac.uk

Wakefield Campus, Margaret Street, Wakefield, West Yorkshire WF1 2DH
Thornes Park Campus, Thornes Park, Wakefield, West Yorkshire WF2 8QZ
skillsXchange, Thunderhead Ridge, Castleford, West Yorkshire WF10 4UA

All Wakefield College Prospectuses are available in text format on the College website.
Alternative formats are available on request, such as large print,
Braille, British Sign Language video, audio tape and CD Rom.
Phone 01924 789228 for details.

